
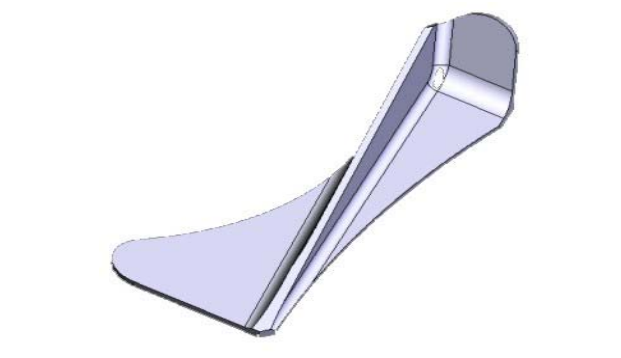

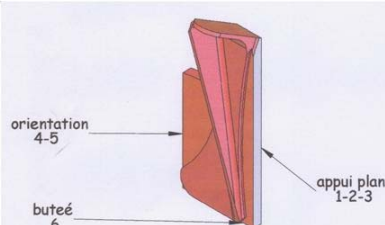

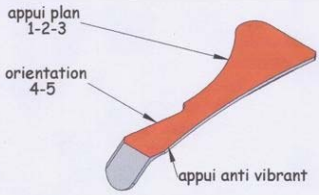


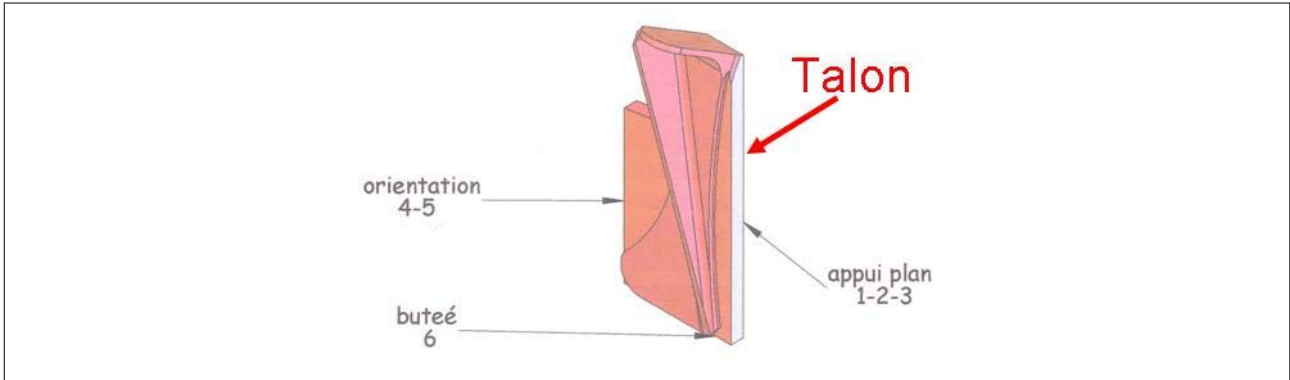
**Mise en situation**

<p>Le client final: <b>AIRBUS</b></p>	<p>Production: <b>120 pièces/mois</b></p>
	

**Présentation du projet de processus**

<div data-bbox="159 1041 311 1115" style="border: 2px solid red; padding: 5px; display: inline-block;"><b>PH10</b></div>  <p><b>DMU 60 P hi-dyn (5 axes)</b> Broche (tr/min) : 30000 max.</p>  <p>PHASE 10 DMG 5 axes (B et C) CUCN vertical</p>	<div data-bbox="1268 1048 1420 1122" style="border: 2px solid red; padding: 5px; display: inline-block;"><b>PH20</b></div>  <p><b>Cincinnati - SABRE 750 (3 axes)</b> Broche (tr/min) : 8000 max.</p>  <p>PHASE 20 Dart 500 3 axes CUCN vertical</p>
---	---

**Pré-conception montage phase 10**



# Equerre de montage Angle Plates



**Matière:**  
Fonte grise (Meehanite) GJL 300.

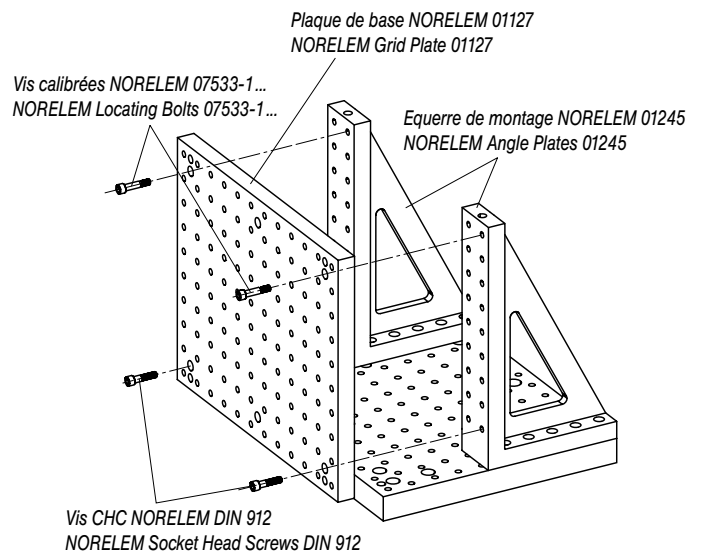
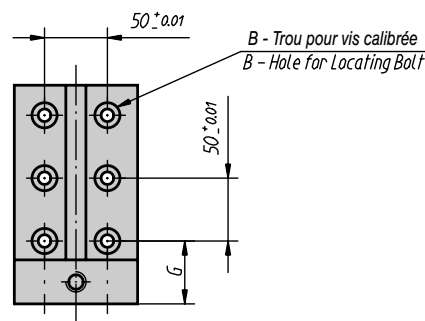
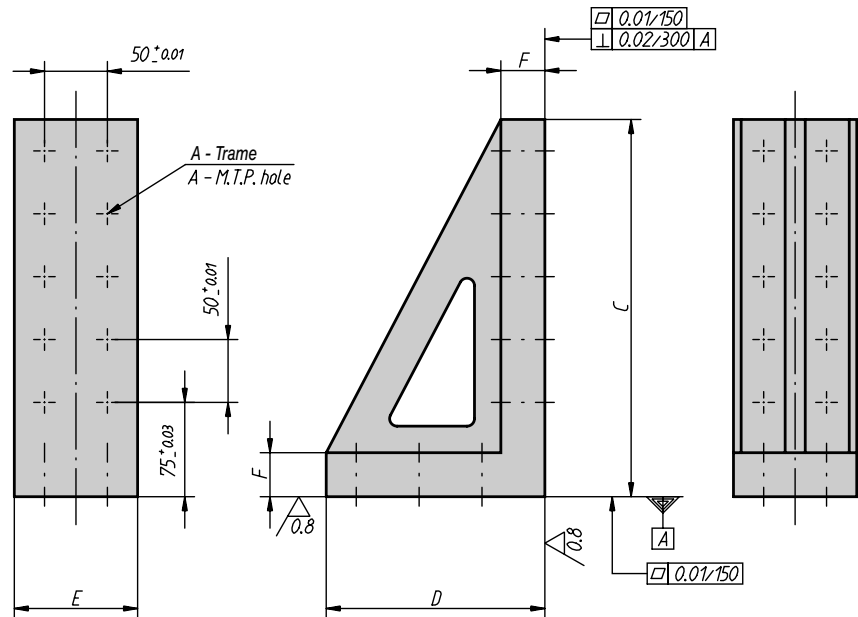
**Finition:**  
Faces d'appui et de fixation rectifiées.

**Nota:**  
Pas  $50 \pm 0,01$  mm.  
Les équerres de montage sont des éléments polyvalents destinés à positionner des pièces à usiner à la verticale.  
Les équerres de montage 01245 peuvent également servir de support pour les plaques de base 01127. Pour positionner et fixer l'équerre de montage 01245 sur la plaque de base 01126, on utilise des vis calibrées 07533.

**Material:**  
Meehanite casting GJL 300.

**Surface finish:**  
Support and mounting surfaces precision-machined.

**Note:**  
Pitch of M.T.P. holes is  $50 \pm 0,01$  mm.  
Angle Plates are versatile elements for vertical positioning of workpieces to be machined.  
Angle Plates 01245 can also be as supports for Grid Plates 01127. For positioning and fastening of Angle Plates on Grid Plates Locating Bolts 07533 are used.



## Equerre de montage nlm / nlm Angle Plates

Référence Order No.	A		BF7 Diam. pour vis calibrée Ø for Locating Bolt	C	D	E	F	G ±0.03	Nombre de trous de Trame Number of M.T.P. holes	Nombre de trous de montage Number of mounting holes	Poids env. kg Approx. weight kg
	Alésage F7 Locating hole F7	Taraudage Thread									
01245-121030	12	M 12	12	300	174	98	35	50	10	6	12
01245-121040	12	M 12	12	400	224	98	35	50	14	8	17
01245-121050	12	M 12	12	500	274	98	35	50	18	10	23
01245-161030	16	M 16	16	300	179	98	40	55	10	6	13
01245-161040	16	M 16	16	400	229	98	40	55	14	8	19
01245-161050	16	M 16	16	500	279	98	40	55	18	10	25

Exemple de commande: Equerre de montage nlm 01245-121030  
Sample order: nlm Angle Plate 01245-121030



**Matière:**

Acier.

**Finition:**

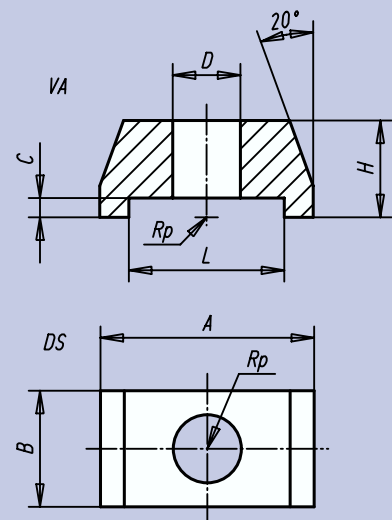
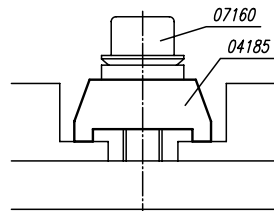
Bruni.

**Exemple de commande:**

nlm 04185-012

**Nota:**

La mini bride permet de serrer simultanément deux pièces à usiner.



Référence	A	B	C	D	H	L	Force de serrage kN	⊞ kg
04185-006	22	12	2	7	10	16	4,82	0,015
04185-008	22	12	2	9	10	16	8,77	0,015
04185-010	35	19	3	11	15	24	13,90	0,050
04185-012	35	19	3	13	15	24	20,20	0,050
04185-016	50	29	5	17	25	36	37,80	0,200



**Matière:**

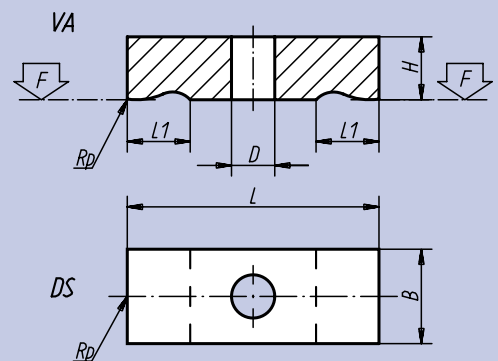
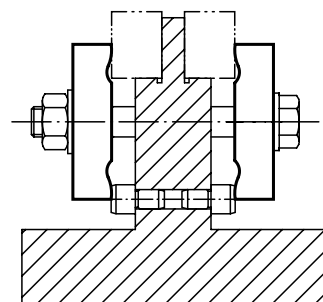
Acier A60.2.

**Finition:**

Bruni.

**Exemple de commande:**

nlm 04190-12



Référence	L	L <sub>1</sub>	B	H	D	F kN	⊞ kg
04190-05	32	8	12	8	5,5	3,42	0,020
04190-06	40	10	16	10	7,0	4,82	0,040
04190-08	50	12	20	12	9,0	8,77	0,090
04190-10	63	16	25	16	11,0	13,90	0,150
04190-12	80	20	32	20	14,0	20,20	0,300
04190-14	100	25	40	25	16,0	27,60	0,620
04190-16	125	32	50	30	18,0	37,80	1,520
04190-20	160	40	60	30	22,0	58,80	2,650